

C A S E S T U D Y

BEFORE: EXTERIOR



AFTER: EXTERIOR



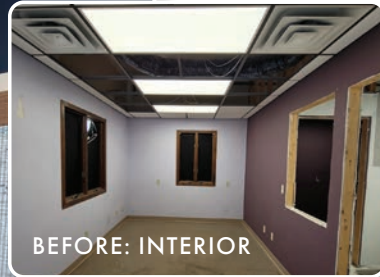
An Office Environment That Makes You Smile

Elhton Dental Center, a rural family dental office, tasked to FUNchitecture with the goal of turning their new office into a vacation oasis. From the moment you walk in the door, they wanted their patients, and staff, to feel like they were on a relaxing, tropical retreat with a priority of providing top notch dental care.

Originally a small community bank, the building had years of deferred maintenance, requiring many FUNdamental updates. The old pebble coated panels on the building's exterior were removed and replaced with board and batten composite siding, along with a new storefront and fresh paint. To save on construction resources, the windows, perimeter sidewalks and the shell of the building were saved.

Continued on back...

CASE STUDY



Continued from front...

The inside of the building already had some interior walls, restrooms and ceiling with a grid. Bathrooms and a new laundry room was strategically placed in order to reuse the building's original plumbing. The board and batten theme from the exterior was carried inside, and new wallcoverings and rattan fixtures were added to emphasize the clean, nautical oasis theme. All new ceilings, LED lights on dimmers and occupancy sensors contribute to an energy efficient building and contribute to excellent patient care. The new operatories are open and spacious, with custom cabinetry designed for storage.

Elkton Dental also wanted to ensure staff were well taken care of too. In the new staff area, FUNchitecture created a great space for staff to change into clean scrubs, store personal belongings and launder their scrubs at the end of the day by adding a new laundry tub, washer and dryer. The old bank drive-thru curbs were leveled with new concrete, creating a covered back patio where staff could enjoy fresh air and lunch outside.

Now patients and staff leave the Elkton Dental Center with a smile on their faces!